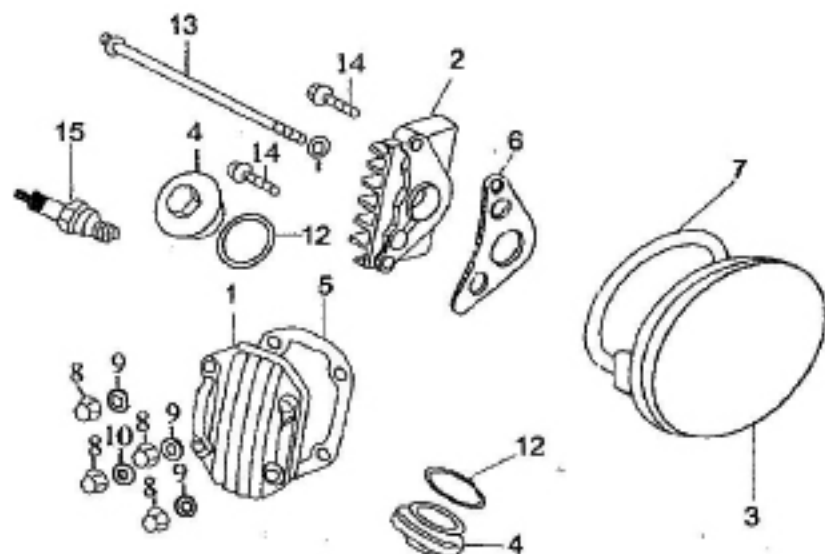
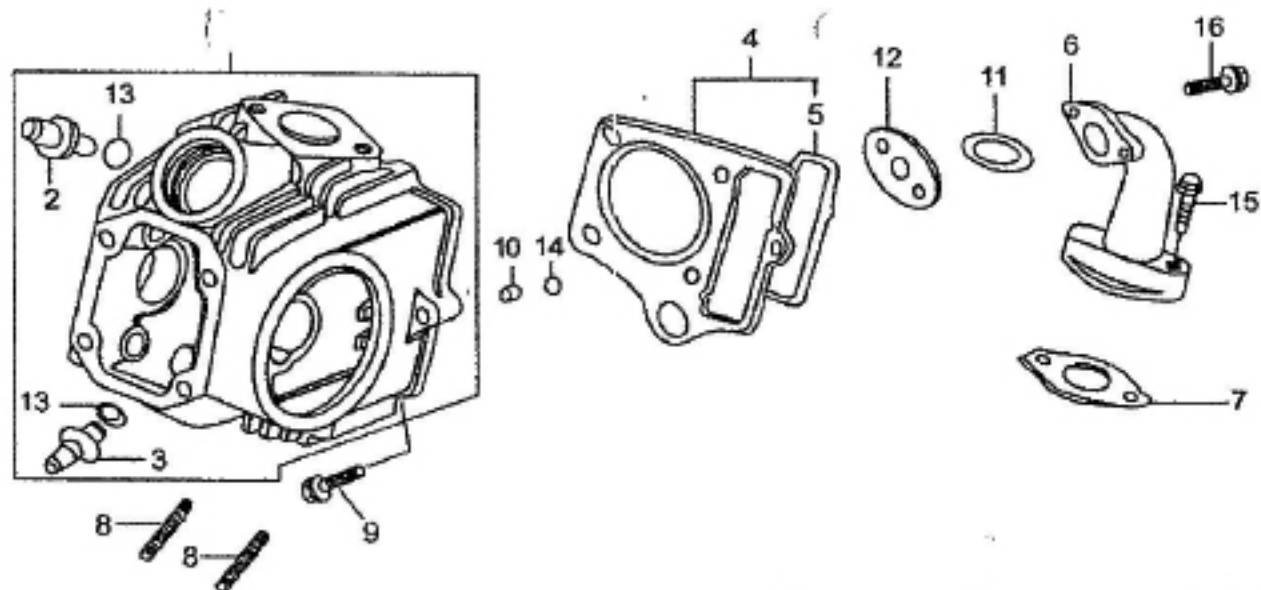


E-1 气缸头盖 Cylinder Head Cover



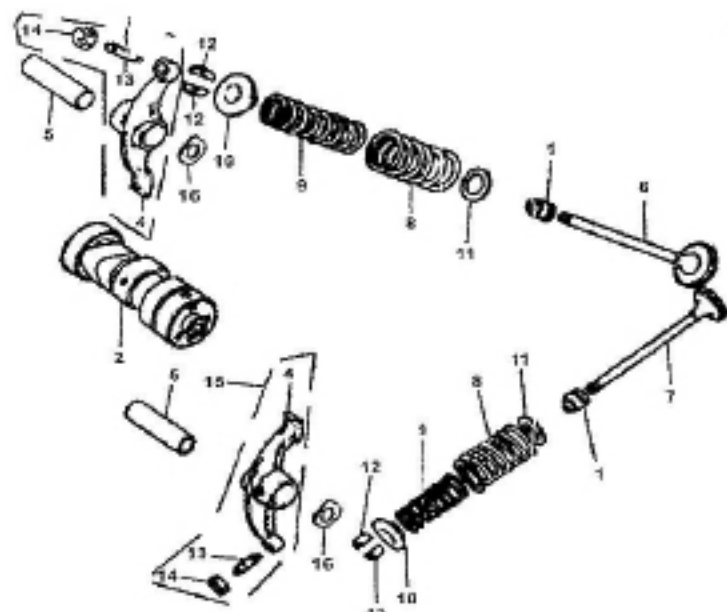
序号 Ref.No.	零部件编码 Part No.	零部件名称	Description	数量 Quantity	备注 Remark
1	D00A036	气缸头盖	Cover,Cylinder Head	1	
2	E03A035	气缸头右盖	Cylinder Head Cover,RH	1	
3	E03A033	气缸头左盖	Cylinder Head Cover,LH	1	
4	D00A032	气门盖	Cover,Valve	2	
5	D00B009	气缸头盖密封垫	Gasket,Cylinder Head Cover	1	
6	D00B007	气缸头右盖密封垫	Gasket,Cylinder Head Cover,RH	1	
7	D00B006	气缸头左盖密封垫	Gasket,Cylinder Head Cover,LH	1	
8	923H070000	盖形螺母M7	Cap Nut M7	4	
9	E03L016	铁垫圈7	Steel Washer 7	3	
10	E03L008	铜垫圈7	Copper Washer 7	1	
11	D00L020	铝垫圈6	aluminium Washer 6	1	
12	D00C058	气门盖O型圈30.8×3.2	O-ring 30.8×3.2	2	
13	96006110	螺栓M6×110	Bolt M6×110	1	
14	96006025	螺栓M6×25	Bolt M6×20	2	
15	D00D021	火花塞A7TC	Spark Plug A7TC	1	

E-2 气缸头 Cylinder Head

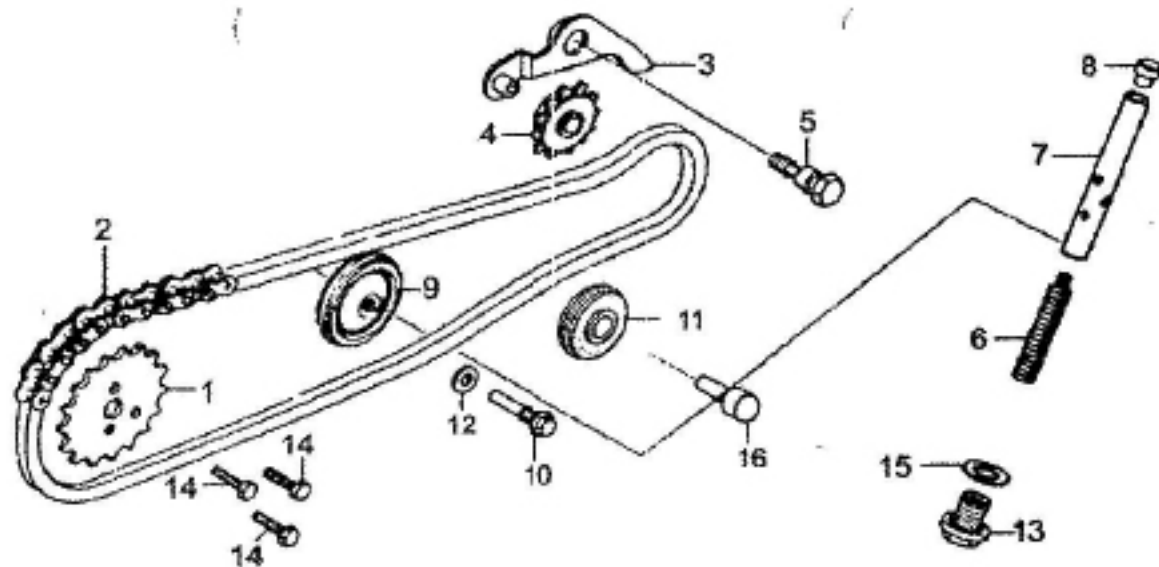


序号 Ref.No.	零部件编码 Part No.	零部件名称	Description	数量 Quantity	备注 Remark
1	200A000	气缸头组件	Cylinder Head Sub-Assy	1	
2	D00A001	进气门导管	Guide,Intake Valve	1	
3	D00A002	排气门导管	Guide,Exhaust Valve	1	
4	E03B008	气缸头密封垫	Gasket,Cylinder Head	1	
5	201-2-5	链条腔封环组合	Gasket,Chain Bousing	1	
6	L00JQ16	进气管	Inlet Pipe	1	
7	D00B014	进气管密封垫	Gasket,Inlet Pipe	1	
8	D00M009	双头螺栓M6×32	Stud M6×32	2	
9	E03M016	连接螺栓M6×23	Bolt M6×23	1	
10	D00L040	翻边衬套Φ8×9	Sleeve Φ8×9	1	
11	D00C059	O型密封圈25.4×2.4	O-Ring 27×2.0	1	
12	D001C039	进气管胶木垫	Insulating Mat,Inlet Pipe	1	
13	D00C047	导管O型圈9×1.6	O-Ring 9×1.6	2	
14	D00C031	矩形圈9×11.7×1.5	Rectangular Ring 9×11.7×1.5	1	
15	578306028BCR	螺栓M6×28	Bolt M6×28	2	
16	578306022BCR	螺栓M6×22	Bolt M6×22	2	

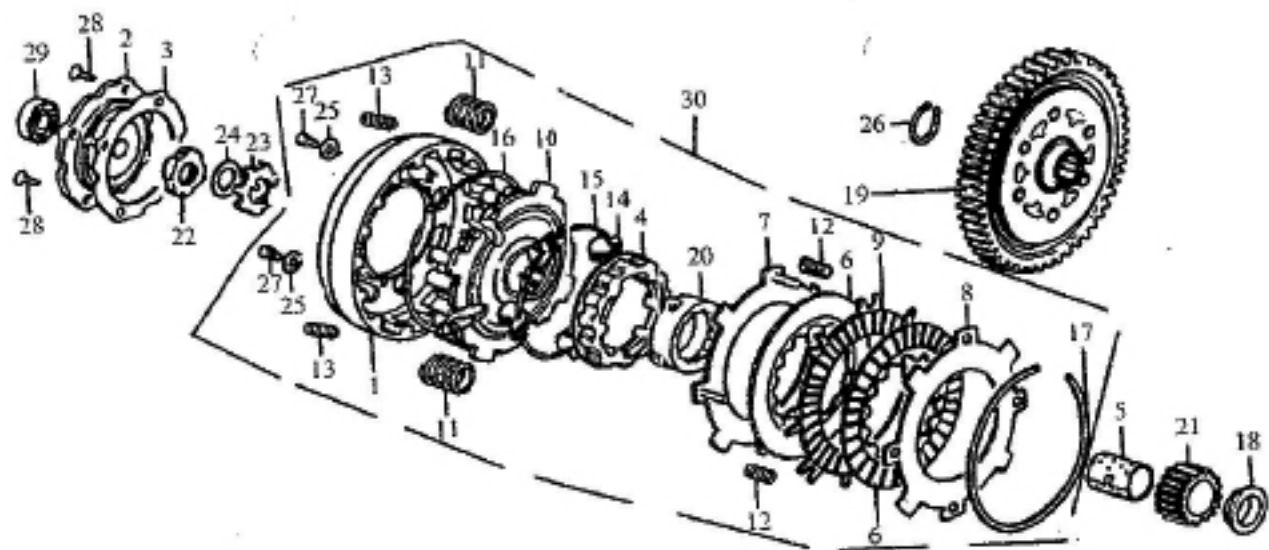
E-3 凸轮轴 气门 Camshaft & Valves



序号 Ref.No.	零部件编码 Part No.	零部件名称	Description	数量 Quantity	备注 Remark
1	D00C043	挡油罩	Oil seal, Valve Stem	2	
2	D0013F020	凸轮轴组件	Camshaft Assy	1	
4	D00F000	气门摇臂	Rocker Arm, Valve	2	
5	D00F015	摇臂轴	Shaft, Rocker Arm	2	
6	D00F045	进气门	Intake Valve	1	
7	D00F039	排气门	Exhaust Valve	1	
8	D00H003	气门外弹簧	Outer Spring, Valve	2	
9	D00H004	气门内弹簧	Inner Spring, Valve	2	
10	D00F034	气门内外弹簧座	Spring Retainer, Upper	2	
11	D00F031	气门外弹簧座圈	Spring Retainer, Outer	2	
12	D00F033	气门锁夹	Spring Cone, Valve	4	
13	A00F001	气门间隙调节螺钉	Adjusting Screw, Valve Gap	2	
14	A00F002	气门间隙调节螺母	Lock Nut	2	
15	D00F000	气门摇臂组件	Rocker Arm Assy	2	
16	200L043	波形垫圈17.5×10.5×0.2	Washer 17.5×10.5×0.2	2	
E-4	正时链条 张紧器	Timing Chain & Tensioner			

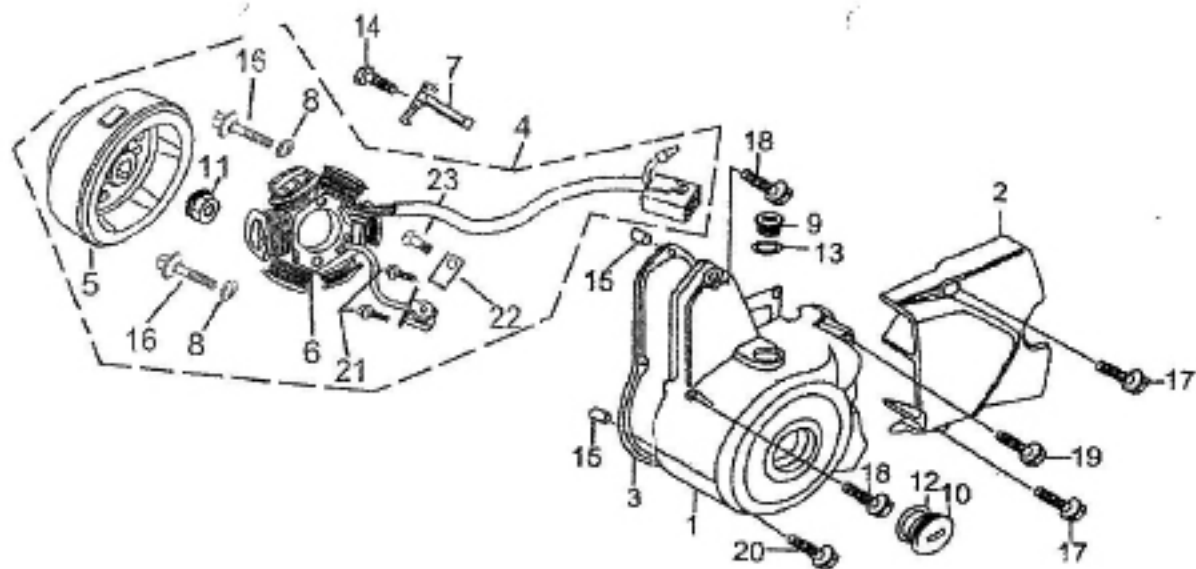


序号 Ref.No.	零部件编码 Part No.	零部件名称	Description	数量 Quantity	备注 Remark
1	E03F011	正时从动链轮(32T)	Timing Driver Sprocket(32)	1	
2	E03F012	正时链条(90T)	Timing Chain(94T)	1	
3	D00F043	链条张紧臂组件	Tensioning Arm	1	
4	D00C020	链条张紧滚轮组件	Tensioning Roller	1	
5	E04F041	链条张紧臂芯轴	Screw	1	
6	D00H006	链条张紧杆弹簧	Spring	1	
7	D00F042	链条张紧杆组件	Tensioning Bar	1	
8	D00C022	链条张紧杆头	Cap	1	
9	E03C023	链条导向滚轮组件	Guiding Wheel	1	
10	E03F048	导向滚轮销轴	Pin,Guiding Wheel	1	
11	E04C021	链条张紧滚轮 2	CHAIN TENSION CONTACT ROLLER II	1	
12	D00L019	铝垫圈8	AluminiumWasher 8	1	
13	D00E025	密封螺塞14	Sealing Plug M14×1.5	1	
14	578305012	六角螺栓M5×12	Bolt M5×12	3	
15	D00L021	铝垫圈14	Aluminium Washer 14	1	
16	E04F041	链条张紧滚轮 2 销轴	CHAIN TENSION CONTACT ROLLER II PIN	1	
E-5	气缸体	Cylinder			



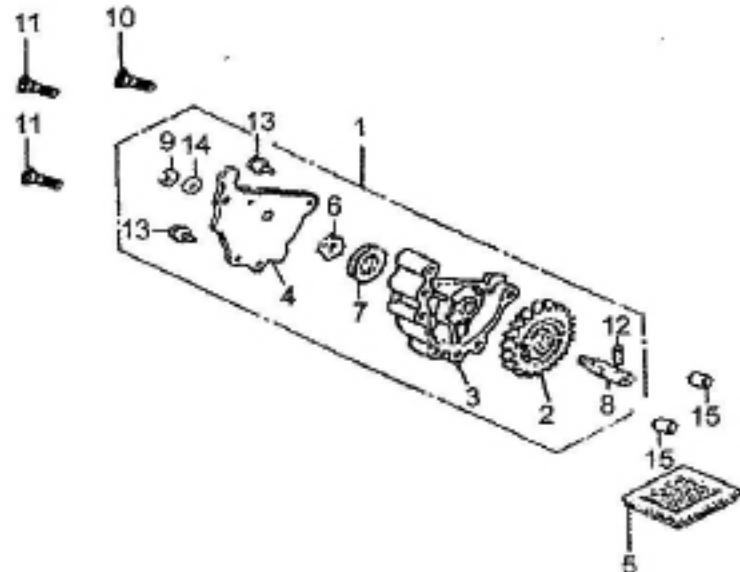
序号 Ref.No.	零部件编码 Part No.	零部件名称	Description	数量 Quantity	备注 Remark
17	201-7-17	离合器弹性挡圈	Spring Collar	1	
18	A00G026	离合器套圈	Washer	1	
19	D02K016	从动齿轮	Primary Driver Gear(69Z)	1	
20	201-7-20	离合器定心套	Sleeve, Drive Gear	1	
21	D02K016	主动齿轮	Primary Driver Gear(17Z)	1	
22	A00G055	离合器大圆螺母	Lock Nut M14×1	1	
23	A00G022	离合器止退垫圈	Lock Washer 14	1	
24	A00G052	离合器碟形垫圈	Washer 14	1	
25	201-7-25	垫圈5	Washer 5	4	
26	A00K017	从动齿轮挡圈	Circllet	1	
27	81805010	GB818螺钉M5×10	Screw M5×10	4	
28	81905010	GB819螺钉M5×10	Screw M5×10	4	
29	2766000	轴承6000	Roller Bearing 6000	1	
30	201G060	离合器本体	Clutch Set	1	
29	2766000	轴承6000	Roler Bearing 6000	1	
30				1	

E-8 左曲轴箱盖 磁电机 Left Crankcase Cover & Magnetic Motor



序号 Ref.No.	零部件编码 Part No.	零部件名称	Description	数量 Quantity	备注 Remark
1	D00A040	左前盖	Crankcase Cover,LH	1	
2	L00WG13	左后盖	Rear Cover,LH	1	
3	D00B001	左前盖密封垫	Gasket,Crankcase,LH	1	
4	D00D050	磁电机总成	Magneto Assy	1	
5	D00D060	磁电机转子组合	Rotor,Magneto	1	
6	D00D070	磁电机定子组合	Stator,Magneto	1	
7	C00L011	线束压板	Wire Clamp 6	1	
8	93060000	弹簧垫圈6	Washer 6	2	
9	D00A042	小视孔盖	A.c generator cap	1	
10	D00A043	大视孔盖	hole plug	1	
11	617710000	磁电机紧固螺母M10×1.25	Lock Nut	1	
12	D00C051	O形圈27.4×2.4	O-ring 27.4×2.4	1	
13	D00C052	O形圈13.8×2.5	O-ring 13.8×2.5	1	
14	96006016	螺栓M6×16	Bolt M6×16	1	
15	97008012	定位销8×12	Set Pin 8×12	2	
16	96006020	带盘螺栓M6×20	Bolt M6×16	2	

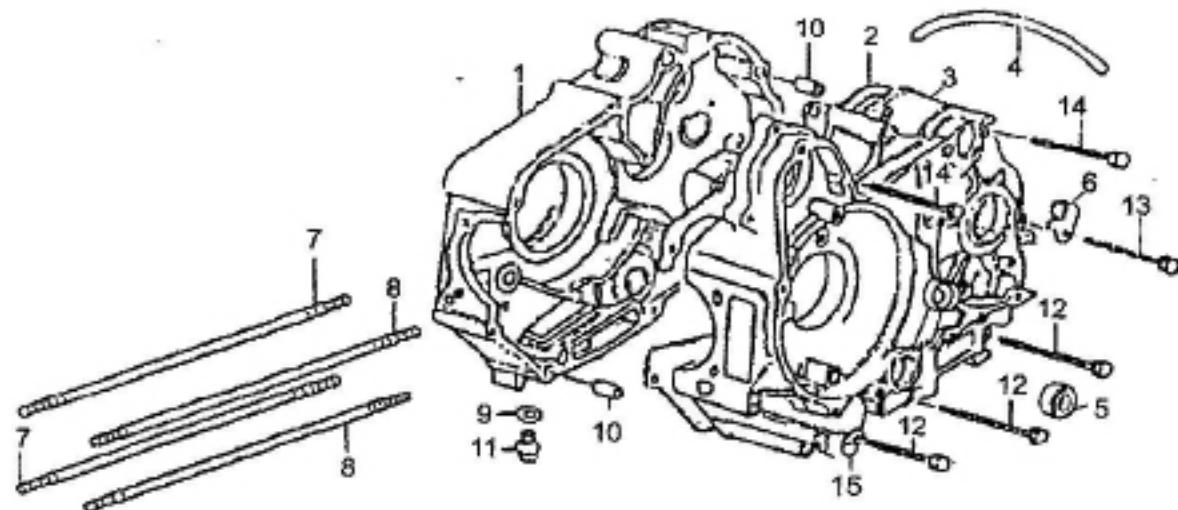
E-8 左曲轴箱盖 磁电机 Left Crankcase Cover & Magnetic Motor



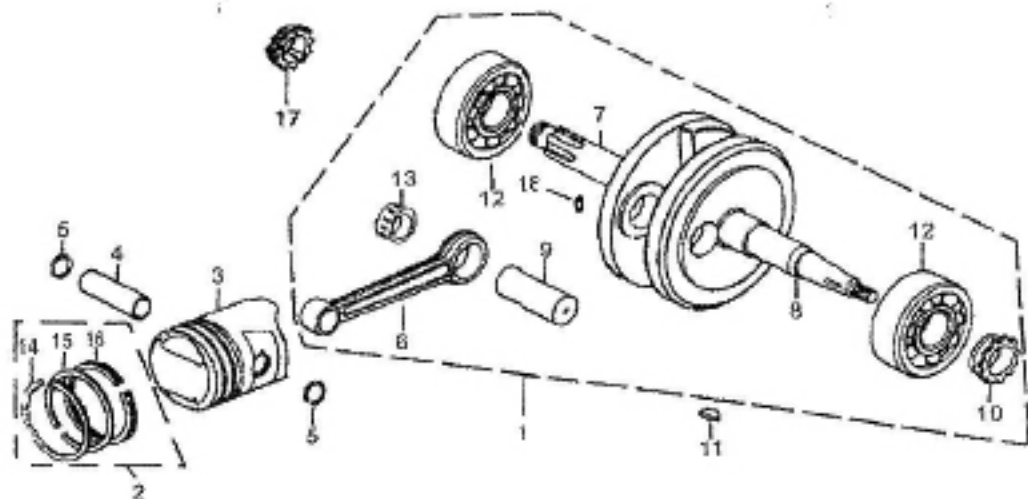
序号 Ref.No.	零部件编码 Part No.	零部件名称	Description	数量 Quantity	备注 Remark
1	200E000	机油泵总成	Oil pump Assembly	1	
2	201-9-2	机油泵从动齿轮	Driven gear	1	
3	201-9-3	机油泵体	Oil pump body	1	
4	201-9-4	机油泵盖	Oil pump cover	1	
5	D00C037	机油过滤网组合	Oil gauze filter	1	
6	201-9-6	机油泵内转子	Oil pump inner rotor	1	
7	201-9-7	机油泵外转子	Oil pump outer rotor	1	
8	201-9-8	机油泵轴	Oil pump shaft	1	
9	201-9-9	挡圈	Collar	1	
10	201-9-10	螺钉M6×35	Screw M6×35	1	
11	201-9-11	螺钉M6×40	Screw M6×40	2	
12	201-9-12	销3×16	Set pin 3×16	1	
13	201-9-13	螺栓M5×10	Bolt M5×10	2	
14	201-9-14	垫圈6	Washer 6	1	
15	201-9-15	定位销	Limit pin	2	

E-10 起动离合器

Starting Clutch

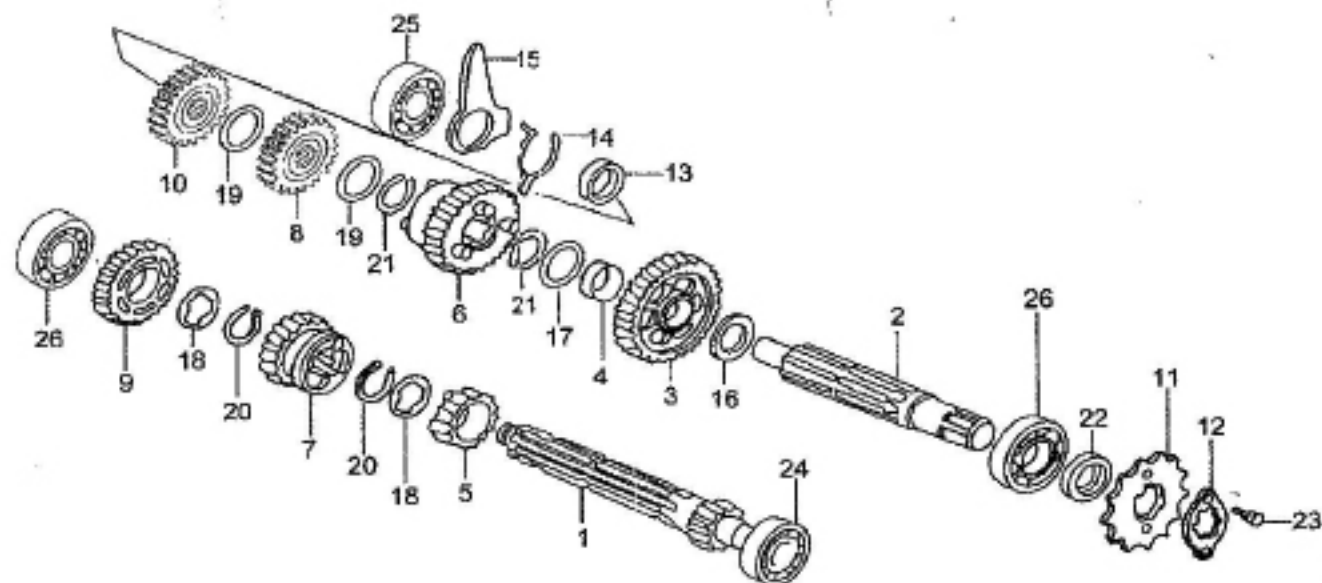


序号 Ref.No.	零部件编码 Part No.	零部件名称	Description	数量 Quantity	备注 Remark
1	E04A020	右曲轴箱组件	Crankcase Sub-Assy,RH	1	
2	E04B005	曲轴箱密封垫圈	Gasket,Crankcase	1	
3	E04A010	左曲轴箱组件	Crankcase Sub-Assy,LH	1	
4	D00C024	废气管	Exhaust Pipe	1	
5	D00C026	变档轴油封11.6×24×10	Oil Seal 11.6×24×10	1	
6	D00L014	废气管管夹	Clamp	1	
7	E03M001	双头螺栓A	Bolt A,Cylinder	2	
8	E03M002	双头螺栓B	Bolt B,Cylinder	2	
9	D00L022	放油螺塞垫圈	Washer	1	
10	97010014	定位销10×14	Dowel Pin 10×14	2	
11	D00E026	放油螺塞M12×1.5	Drain Plug M12×1.5	1	
12	96006065	螺栓M6×65	Crown Bolt M6×65	3	
13	96006050	螺栓M6×50	Crown Bolt M6×50	1	
14	96006060	螺栓M6×60	Crown Bolt M6×60	2	
15	D00L039	高压管夹	Pipe Clamp	1	



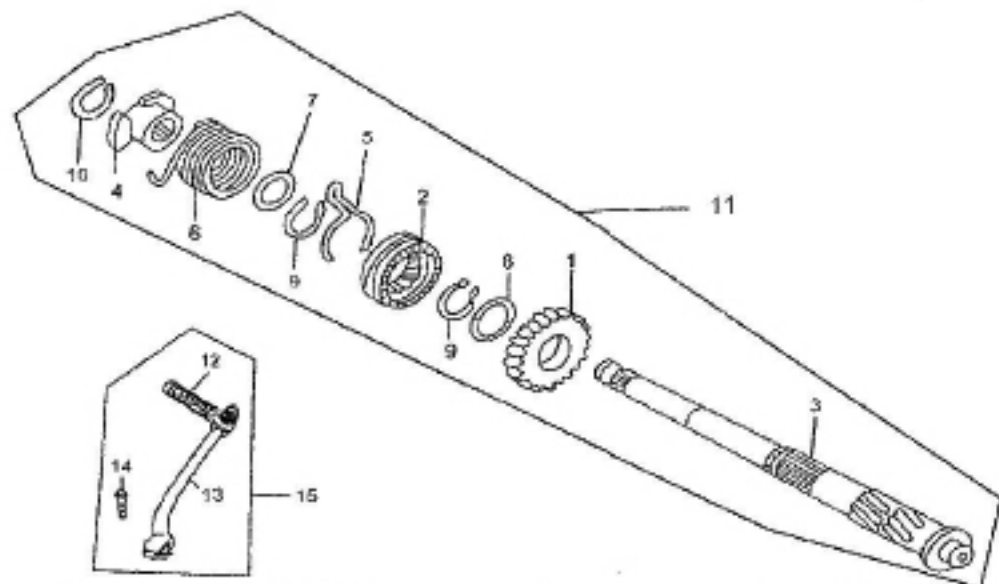
序号 Ref.No.	零部件编码 Part No.	零部件名称	Description	数量 Quantity	备注 Remark
1	2001J000	曲柄连杆总成	Crankshaft & Connecting Rod	1	
2	E00J013	活塞环组合	Piston Ring Set	1	
3	E00J014	活塞	Piston	1	
4	E00J012	活塞销	Piston Pin	1	
5	D00J011	活塞销挡圈	Circlip,Piston Pin	2	
6	200J025	连杆	Connecting Rod	1	
7	200J005	右曲柄	Crankshaft,RH	1	
8	200J006	左曲柄	Crankshaft,LH	1	
9	D00J007	曲柄销	Pin,Crankshaft	1	
10	E04J002	正时主动链轮(16T)	Drive Sprocket,Timing(16T)	1	
11	D00J001	半圆键	Woodruff Key	1	
12	2766304	轴承6304	Bearing 6304	2	
13	A00J008	连杆大头轴承	Bearing	1	
14	E00J009	活塞环(一)	Piston Ring(I)	1	
15	E00J010	活塞环(二)	Piston Ring(II)	1	
16	E00J015	油环组合	Oil ring,3-piece	1	
17	E04E033	油泵齿	Oil pump Driving Gear	1	
18	201-13-18	销	Set pin	1	

E-14 主轴和副轴 Transmission

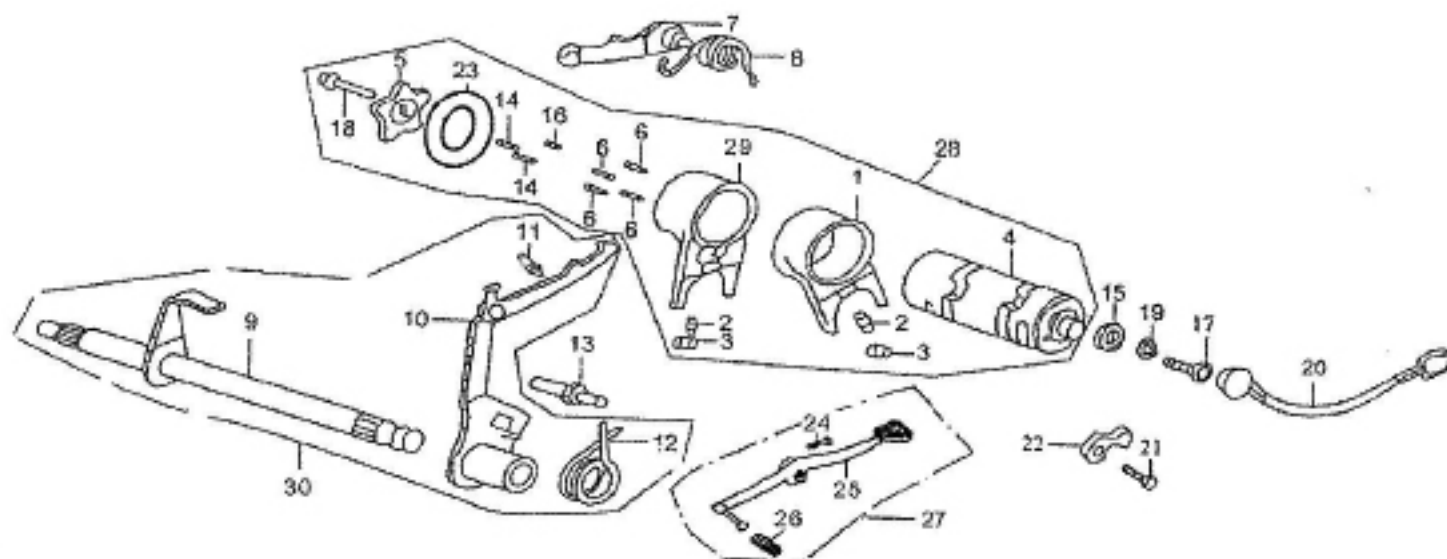


序号 Ref.No.	零部件编码 Part No.	零部件名称	Description	数量 Quantity	备注 Remark
1	D02K031	转动主轴	MAIN SHAFT	1	
2	D00K041	转动副轴	COUNTER SHAFT	1	
3	D00K042	副轴一档齿轮	C-1 GEAR	1	
4	A00K043	衬套20×9	BUSH 20×9	1	
5	D00K032	主轴二档齿轮	M-2 GEAR	1	
6	D00K045	副轴二档齿轮	C-2 GEAR	1	
7	D00K033	主轴三档齿轮	M-3 GEAR	1	
8	D00K046	副轴三档齿轮	C-3 GEAR	1	
9	D00K034	主轴四档齿轮	M-4 GEAR	1	
10	D00K047	副轴四档齿轮	C-4 GEAR	1	
11	D00K014	主动链轮	DRIVE SPROCKET 14T	1	
12	D00K013	固定板	DRIVE SPROCKET FIXING PLATE	1	
13	D00K057	衬套	COLLAR	1	
14	D00K058	弹簧	SPRING	1	
15	D00K071	变速鼓限位板	GEARSHIFT DRUM LOCK PLATE	1	
16	A00K054	止推垫圈17mm	THRUST WASHER 17MM	1	

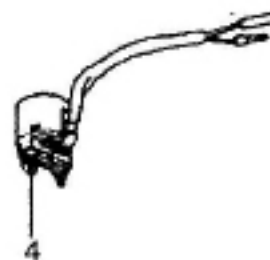
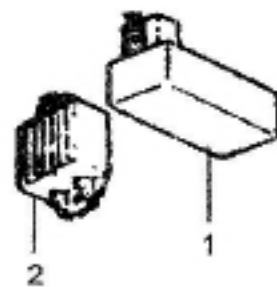
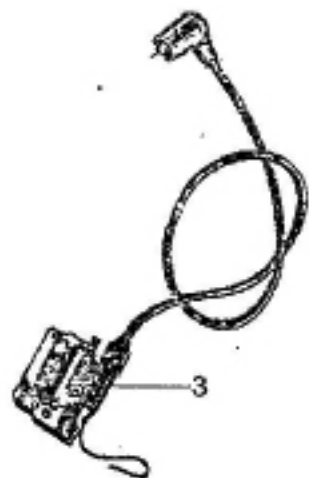
E-14 主轴和副轴 Transmission



序号 Ref.No.	零部件编码 Part No.	零部件名称	Description	数量 Quantity	备注 Remark
1	D00I009	起动齿轮	PINION KICK STARTER	1	
2	D00I006	起动棘轮	STARTER DRIVE RATCHET	1	
3	D00I010	起动轴	KICK STARTER SPOINDLE	1	
4	D00I011	起动轴弹簧座	KICK SPRING RETAINER	1	
5	D00I016	起动齿轮摩擦弹簧	STARTER PINION FRICTION SPRING	1	
6	D00I012	起动轴复位弹簧	KICK STARTER SPRING	1	
7	A00I008	垫圈17mm	WASHER 17MM	1	
8	A00I004	止推垫圈20mm	THRUST WASHER 20MM	1	
9	A00I002	档圈20mm	SER RING 20MM	2	
10	A00I007	档圈16mm	EXTERNAL CIRCLIP 16MM	1	
11	D00I000	起动轴组件	Starting Shaft Assy	1	
12	201-15-12	踏杆胶套	Rubber Boot	1	
13	201-15-13	起动杆组合	Kick-edal	1	
14	578306020	螺栓M6×20	Bolt M6×20	1	
15	201-15-15	起动杆总成	Kick-pedal Assy	1	



Ref.No.	Part No.	零部件名称	Description	数量 Quantity	备注 Remark
1	D00K061	拨叉(一)	Fork(I)	1	
2	A00K069	拨销	Guide pin	2	
3	A00K063	弹簧夹	Circlip	2	
4	D00K066	变档鼓	Gear Shift Drum	1	
5	D00K023	五星板	Gear Shift Drum Stopper Plate	1	
6	D00K059	档位指示销(一)	Pin(I)	4	
7	D00K070	变速鼓定位板组件	Locator, Gearshift	1	
8	D00H009	变速鼓定位板弹簧	Torque Spring	1	
9	D00K001	换档轴组合	Shaft, Gearshift	1	
10	201-16-10	变档拨板组合	Shifter Set	1	
11	201-16-11	变档拨板弹簧	Spring, Shifter	1	
12	201-16-12	变档轴回位弹簧	Back Spring, Gearshift Shaft	1	
13	D00K024	换档臂定位螺栓	Shift Return Spring Pin	1	
14	201-16-14	滚针Φ3×8.5	Roller Φ3×8.5	2	
15	D001D040	档显器组件	Gear Indicating Contactor Set	1	
16	201-16-16	档位指示销(二)	Gearshift Indicator(II)	1	
E-16	变档凸轮	Gearshift Drum			



序号 Ref.No.	零部件编码 Part No.			Quantity	备注 Remark
1	L00E050	点火控制器	CDI	1	
2	L001E020	电压调节器	Voltage Regulator	1	
3	L00E010	点火线圈	Ignition Coil	1	
4	L00E030	启动继电器	Start Relay	1	